



Vertically Integrated, Made in the USA

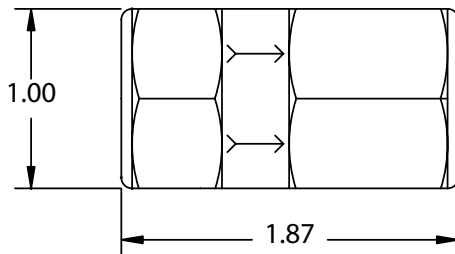
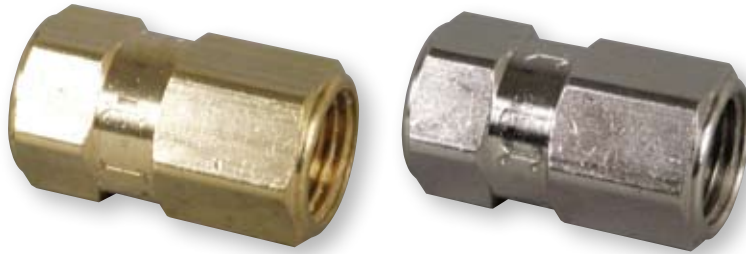
### THE SPECIALTY MFG. CO.

5858 Centerville Road • St. Paul, MN 55127-6804

Tel: (651) 653-0599 • Fax: (651) 653-0989

www.specialtymfg.com • e-mail: info@specialtymfg.com

## 850 SERIES CHECK VALVE



### Design Considerations

The 850 Series Poppet Check Valve incorporates an o-ring that is captured in a brass poppet to seal on a brass seat in the check valve body. The poppet style is an economical, general use design that provides a positive seal down to about 1/2 psi back pressure. The maximum operating pressure is 1200 psi. UL / UR configurations are available and rated to 500 psi.

- Maximum Operating Pressure — 1200 psi
- Maximum Operating Temperature — 180°F
- Seat Area Open Diameter — .470

### Options

<b>Material Options</b>	Brass Body, Poppet and Stop
<b>Seal Options</b>	Buna-N, Ethylene Propylene, Fluoroelastomer (Viton®), Neoprene
<b>Body Options</b>	1/2 FNPT Inlet x 1/2 FNPT Outlet
<b>Cracking Pressure</b>	302 Stainless Spring – 1 psi (Standard), 3, 5 psi, No Spring
<b>Plating Options</b>	No Plating (Standard), Electroless Nickel

### Example of How To Order

<b>Inlet End</b> 1/2 FNPT	<b>Outlet End</b> 1/2 FNPT	<b>Seal</b> Viton®	<b>Spring</b> 1 psi	<b>Plating</b> None
------------------------------	-------------------------------	-----------------------	------------------------	------------------------

**SMC Part Number:** CHK BRS 850-8F8F-F

The flow arrow on the body will point from Inlet to Outlet. SMC Part Numbers are a description of the valve as read left to right, Inlet to Outlet.

Example: CHK BRS 850-8F8F-F = 1/2 FNPT Inlet x 1/2 FNPT Outlet

SMC will quote alternate materials or customize our standard products when quantities ensure competitive pricing.