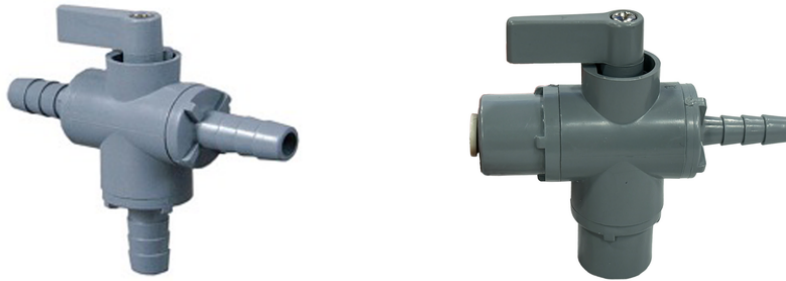


Configure your exact valve



SCAN ME

326 Series Ball Valve



Design Considerations

The 326 Series Three-Way Ball Valve design promotes multiple configurations to fit the exact end use application. The bottom port is common and the 326 Series can be used as a diverter or selecting valve. The handle has 180 degree rotation and lies over the open port. When the handle is rotated 90 degrees from either port, flow is shut off to both ports. Most PVC and White Filled Polypropylene configurations are available as NSF Standard 42 & 61 Certified. Nylon, PVDF (Kynar®) and Filled Polypropylene are available for chemical resistance applications. MakroBlend is an NSF Standard 51 Certified Material. The optional panel mount version requires a .750 hole and is supplied with a knurled brass panel mount nut. The maximum panel thickness is .125.

Specifications:

Maximum Operating Pressure — 125 psi Maximum Operating Temperature — 140°F Ball Through Hole Diameter — .312

Material Options	Gray PVC (Standard), White PVC, Black Polypropylene, White Polypropylene, Black Nylon, White Nylon, MakroBlend, Black PVDF (Kynar®)
Seal Options	Buna-N, Ethylene Propylene, Fluoroelastomer (Viton®)
End Options	1/8, 1/4 Male and Female NPT 3/8 BIB (Smooth Barb) 1/8, 1/4, 5/16, 3/8, 1/2 Hose Barb 1/8, 1/4 JACO (Not NSF Standard 42 Certified) 1/4, 3/8, 5/16 SMC Push-To-Connect
Handle Options	Gray PVC Flag Handle (Standard), Black Nylon, White PVC, Blue PVC See page two for handle diagrams
Panel Mount Options	Non-Panel Mount (Standard), Brass Knurl Nut, Nickel Plated Knurl Nut, Brass Hex Nut, Nickel Plated Hex Nut

Example of how to order:

Body Material	Inlet End	Outlet End	Outlet End	Seal	Panel
PVC	1/4 MNPT	1/4 FNPT	1/4 Barb	Buna-N	ENP HEX

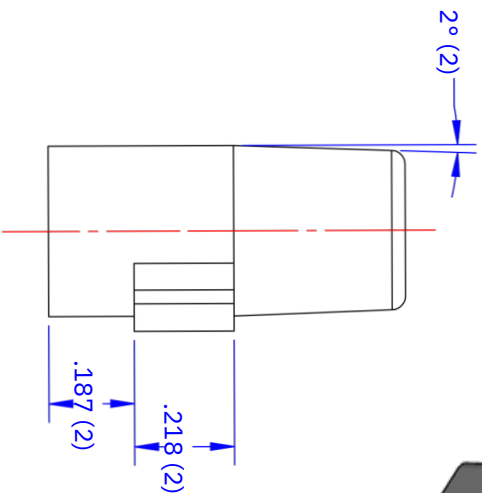
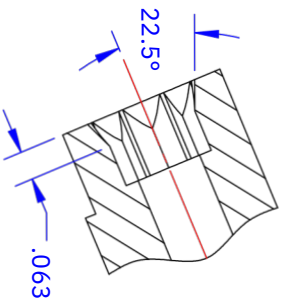
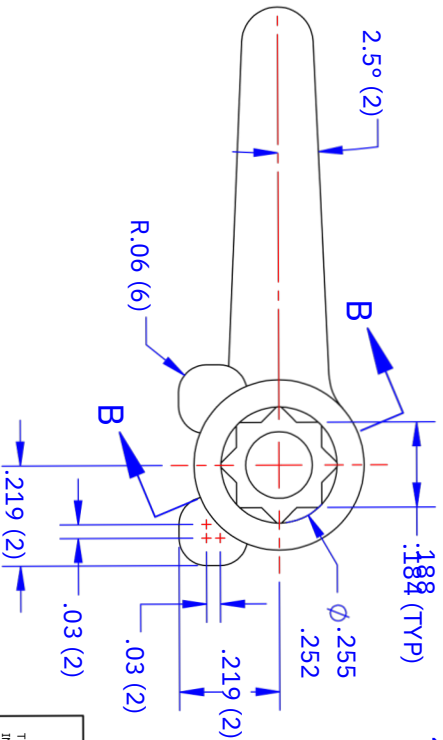
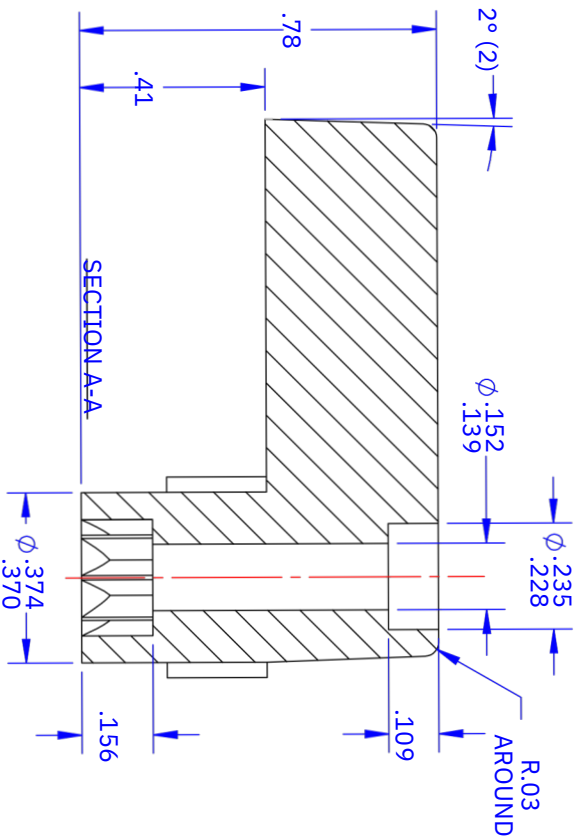
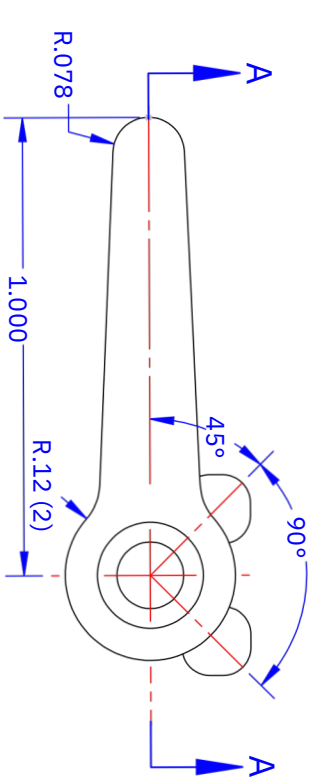
Part Number PVC 326-4M4F4B-B,PNL,ENP HEX

The handle will lie over the open port when the valve is in the Full Open position. SMC Part Numbers are a description of the valve as read left to right, Inlet to Outlet to Outlet.

Example: PVC 326-4M4F4B-B,PNL,ENP HEX = 1/4 MNPT Inlet x 1/4 FNPT Outlet x 1/4 Barb Outlet

REV	DATE BY	DESCRIPTION
A	12/14/11	KLKECO 2397, ADDED 1180160
A	4/18/2018	SGP PROJECT 4UF, REDRAW TO SOLIDWORKS
A	12/7/2020	JESECO 2751, 1180202, MAT'L WAS PVDF, BLACK
A	8/19/2022	JESECO 2936, 1180069 MATERIAL, M1210 WAS M3200

REVISIONS



1180160	NYLON, TYPE 66, BLACK	ABS	BASF
1180204	TERLURAN #GP-22, NATURAL		
1180203	PVC, YELLOW		
1180202	PVDF, BLACK KYNAR 370		
1180201	WFP RTP 103, NSF		
1180069	PVC, WHITE M1210-1240		
1180068	MAKROBLEND		
1180066	PVC, BLUE		
1180063	PVC, GRAY		
1180062	FP, BLACK (20% GF)		
1180061	NYLON, TYPE 6, WHITE		
1180060	NYLON, TYPE 6, BLACK		

THE SPECIALTY MFG. CO.
 Custom Is Our Specialty
 ST. PAUL, MINNESOTA 55117

5858 CENTREVILLE ROAD

XX	XXX	ANGLES	TITLE	SHEET	DRAWING NO.	REV
* 01	* 005	+ -1°	HANDLE, 3 WAY	10F-1	1180060	A

-NOTICE-
 TO ALL PERSONS RECEIVING THIS DRAWING
 THIS DRAWING CONTAINS CONFIDENTIAL INFORMATION AND IS ISSUED
 IN CONFIDENCE ON THE CONDITIONS THAT IT BE RETURNED ON DE-
 MAND AND NOT BE COPIED, REPRODUCED, DISCLOSED TO OTHERS,
 OR USED IN ANY MANNER WITHOUT THE WRITTEN CONSENT OF THE SPECIALTY MFG. CO.