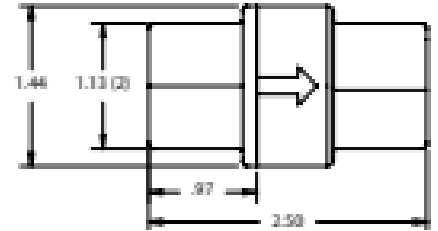


## 685 Series Flow Restrictor Valve



### Design Considerations

The 685 Series Flow Restrictor Valve incorporates a 1/2" NPT Polypropylene Body and Flow Restrictor insert that operates as a flexible orifice to provide reliable flow regulation from .26 to 3.96 Gallons Per Minute. Minimum inlet pressure is 15 psi to reach metered flow rate. Maximum inlet pressure is 125 psi. All materials are NSF Approved under Standard 61.

Configure your exact valve



SCAN ME

### Specifications:

**Maximum Operating Pressure** — 125 psi

**Maximum Operating Temperature** — 140°F

#### Material Options

Body - Black Polypropylene, White Polypropylene  
Delrin Retainer  
Acetal Flow Restrictor  
Ethylene Propylene O-Rings

#### End Options

1/2 Female NPT X 1/2 Female NPT  
1/2 Female NPT X 1/2 Male NPT  
1/2 Male NPT X 1/2 Female NPT  
1/2 Male NPT X 1/2 Male NPT

#### Flow Control Options

.26, .37, .53, .73, .79, .92, 1.06, 1.32, 1.58, 1.85,  
2.11, 2.22, 2.38, 2.64, 3.17, 3.43, 3.7, 3.96 GPM

### Example of how to order:

| Body Material     | Inlet End | Outlet End | Flow Restrictor |
|-------------------|-----------|------------|-----------------|
| White Filled Poly | 1/2 FNPT  | 1/2 FNPT   | 2.38 GPM        |

**Part Number:** WFP FR 685-8F8F-E,2.38 GPM

The flow arrow on the body will point from Inlet to Outlet. SMC Part Numbers are a description of the valve as read left to right, Inlet to Outlet.

Example: WFP FR 685-8F8F-E,2.38 GPM = 1/2 FNPT Inlet x 1/2 FNPT Outlet