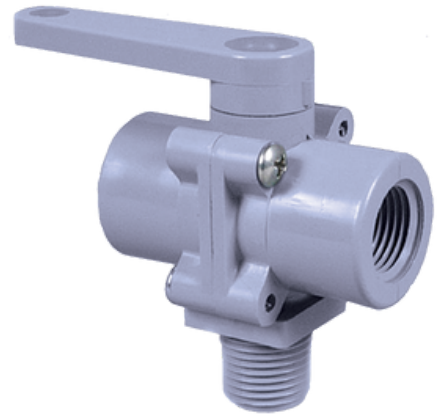


350 Series Ball Valve



Design Considerations

The 350 Series Three-Way Ball Valve design promotes multiple configurations to fit the exact end use application. The bottom port is common and the 350 Series can be used as a diverter or selecting valve. The handle has 180 degree rotation and lies over the open port. When the handle is rotated 90 degrees from either port, flow is shut off to both ports. Gray PVC is the standard material and is an NSF Standard 61 Approved Material. Filled Polypropylene is available for chemical resistance applications. The Lever Handle is standard with an optional Mini-T Handle or Round Handle available.

Configure your exact valve



SCAN ME

Specifications:

Maximum Operating Pressure — 125 psi Maximum Operating Temperature — 140°F Ball Through Hole Diameter — .437

Material Options	Body, Ends, Ball and Handle - Gray PVC (Standard), White Polypropylene, Gray Polypropylene, Black PVC, Black Polypropylene, Black Filled Nylon (NSF18) Black PVDF Screws - Stainless
Seal Options	Buna-N, Ethylene Propylene, Fluoroelastomer (Viton®)
Bottom (Inlet) End Options	1/4, 1/2 Female NPT 1/2, 3/4 Male NPT 3/8, 1/2, 5/8, 3/4 Hose Barb 1/2, 3/4 Socket 1/2 FNPT Stainless Support Ring
Side (Outlet) End Options	1/4, 1/2, 3/4 Female NPT 3/4 x 3/4 NA 3/8, 1/2, 5/8, 3/4 Hose Barb 1/2, 3/4 Socket 1/2, 3/4 Male NPT 1/2 BIB (Smooth Barb) 1/2, 3/4 FNPT Stainless Support Rings
Handle Options	Lever Handle (Standard), Mini-T Handle, Round Handle, 1.0" Offset Extended Handle

Example of how to order:

Body Material	Inlet End	Outlet End	Outlet End	Stem Seal	Handle
PVC	1/2 MNPT	1/4 FNPT	3/8 Barb	Buna-N	Lever

Part Number PVC 350-8M4F6B-B

The handle will lie over the open port when the valve is in the Full Open position. SMC Part Numbers are a description of the valve as read left to right, Inlet to Outlet to Outlet.

Example: PVC 350-8M4F6B-B = 1/2 MNPT Inlet x 1/4 FNPT Outlet x 3/8 Barb Outlet