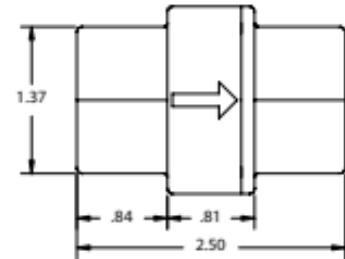


## 687 Series Flow Restrictor Valve



### Design Considerations

The 687 Series Flow Restrictor Valve incorporates a 3/4" Female NPT Polypropylene Body and Flow Restrictor that operates as a flexible orifice to provide reliable flow regulation from .26 to 3.96 Gallons Per Minute. Minimum inlet pressure is 15 psi to reach metered flow rate. Maximum inlet pressure is 125 psi. All materials are NSF Approved under Standard 61.

Configure your exact valve



SCAN ME

### Specifications:

**Maximum Operating Pressure** — 125 psi

**Maximum Operating Temperature** — 140°F

#### Material Options

Body - Black Polypropylene, White Polypropylene  
Delrin Retainer  
Acetal Flow Restrictor  
Ethylene Propylene O-Rings

#### End Options

3/4 Female NPT X 3/4 Female NPT

#### Flow Control Options

.26, .37, .53, .73, .79, .92, 1.06, 1.32, 1.58, 1.85, 2.11, 2.22, 2.38, 2.64, 3.17, 3.43, 3.7, 3.96 GPM

### Example of how to order:

Body Material	Inlet End	Outlet End	Flow Restrictor
White Filled Poly	3/4 FNPT	3/4 FNPT	2.38 GPM

**Part Number:** WFP FR 687-12F12F-E,2.38 GPM

The flow arrow on the body will point from Inlet to Outlet. SMC Part Numbers are a description of the valve as read left to right, Inlet to Outlet.

Example: WFP FR 687-12F12F-E,2.38 GPM = 3/4 FNPT Inlet x 3/4 FNPT Outlet