



Vertically Integrated, Made in the USA

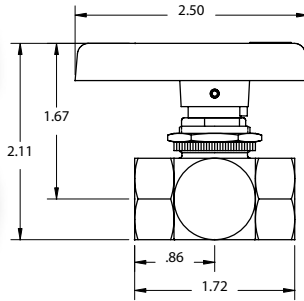
### THE SPECIALTY MFG. CO.

5858 Centerville Road • St. Paul, MN 55127-6804

Tel: (651) 653-0599 • Fax: (651) 653-0989

www.specialtymfg.com • e-mail: info@specialtymfg.com

## 701 SERIES TWO-WAY BALL VALVE



### Design Considerations

The 701 Two-Way Ball Valve Series is designed to promote multiple configurations to fit the exact end use application. The panel mount requires a .812 hole and is supplied with one Knurled and one Hex brass nut. The maximum panel thickness is .150. UL configurations are available and rated to 250 psi. UR configurations are available and rated to 500 psi.

- Maximum Operating Pressure — 500 psi
- Maximum Operating Temperature — 180°F
- Ball Through Hole Diameter — .375

### Options

<b>Material Options</b>	Brass Body and Ends, Nickel Plated Brass Ball, Teflon Seats, Zinc Die Cast Stem, Stainless Stem Screw
<b>Seal Options</b>	Buna-N, Ethylene Propylene, Fluoroelastomer (Viton®), Neoprene
<b>End Options</b>	1/8, 1/4, 3/8, 1/2 Female NPT 3/8 Compression 1/4 Male Flare
<b>Handle Options</b>	2-1/2" Black Nylon Handle (Standard), 2-1/2" Red Nylon, 2-1/2" Blue Nylon, 2" Black Nylon, 2" Yellow Nylon, 2" Red Nylon, 2" White Nylon, No Handle
<b>Plating Options</b>	No Plating (Standard), Electroless Nickel

### Example of How To Order

<b>Inlet End</b> 1/8 FNPT	<b>Outlet End</b> 1/4 FNPT	<b>Stem Seal</b> Buna-N	<b>Plating</b> ENP	<b>Handle</b> 2" RED HDL
------------------------------	-------------------------------	----------------------------	-----------------------	-----------------------------

**SMC Part Number: 701-2F4F-B,ENP,2" RED HDL**

The handle will lie over the open port when the valve is in the Full Open position. SMC Part Numbers are a description of the valve as read left to right, Inlet to Outlet.

Example: 701-2F4F-B,ENP,2" RED HDL = 1/8 FNPT Inlet x 1/4 FNPT Outlet

**SMC will quote alternate materials or customize our standard products when quantities ensure competitive pricing.**