



Vertically Integrated, Made in the USA

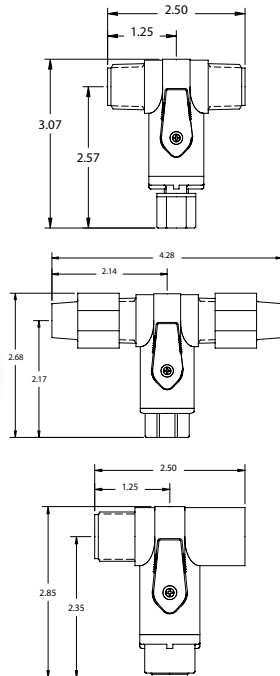
THE SPECIALTY MFG. CO.

5858 Centerville Road • St. Paul, MN 55127-6804

Tel: (651) 653-0599 • Fax: (651) 653-0989

www.specialtymfg.com • e-mail: info@specialtymfg.com

689 SERIES T-LINK VALVE



Design Considerations

The 689 Series T-Link Valve design promotes multiple configurations to fit the exact end use application. The 689 Series Valve was originally designed for the water purification industry as an RO or Ice Maker supply valve and is NSF Standard 42 Certified. The QUEST Ends sized as follows: 1/4 QUEST (3/8 OD TUBE or Copper Pipe), 3/8 QUEST (1/2 OD TUBE or Copper Pipe), 1/2 QUEST (5/8 OD TUBE or Copper Pipe).

Maximum Operating Pressure — 125 psi
Maximum Operating Temperature — 140°F
Ball Through Hole Diameter — .437

Options

Material Options Gray PVC (Standard)

Seal Options Buna-N, Ethylene Propylene

Handle Options Long Handle (Standard), Short Handle

Valve End Options

- 1/8, 1/4, 3/8 Male NPT
- 1/4, 3/8, 1/2 Female NPT
- 1/4, 3/8 SMC Push-To-Connect
- 1/8, 1/4, 3/8, 1/2 Hose Barb
- Tapered Barb
- 3/8 BIB (Smooth Barb)
- 1/4, 3/8 JACO (Not NSF Standard 42 Certified)
- 1/2 FNPT with Stainless Support Ring

T-Link End Options

- 1/4 QUEST (3/8 OD TUBE)
- 3/8 QUEST (1/2 OD TUBE)
- 1/2 QUEST (5/8 OD TUBE)
- 1/2 Female x Male NPSM
- 1/2 Male x 1/2 Male NPT
- 3/4 Male x 3/4 Male NPT

Example of How To Order

Body Material
PVC

Valve End
1/4 JACO

T-Link Ends
3/8 QUEST

SMC Part Number: PVC 689-4CJ6QUEST T-LINK

The handle will lie over the valve end when the valve is in the open position. SMC Part Numbers are a description of the valve as read left to right, Valve End to T-Link Ends.

Example: PVC 689-4CJ6QUEST T-LINK = 1/4 JACO Valve x 3/8 QUEST T-Link

SMC will quote alternate materials or customize our standard products when quantities ensure competitive pricing.