

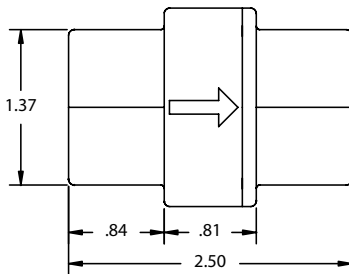


Vertically Integrated, Made in the USA

THE SPECIALTY MFG. CO.

5858 Centerville Road • St. Paul, MN 55127-6804
Tel: (651) 653-0599 • Fax: (651) 653-0989
www.specialtymfg.com • e-mail: info@specialtymfg.com

687 SERIES FLOW RESTRICTOR VALVE



Design Considerations

The 687 Series Flow Restrictor Valve incorporates a 3/4" Female NPT Polypropylene Body and Flow Restrictor that operates as a flexible orifice to provide reliable flow regulation from .26 to 3.96 Gallons Per Minute. Minimum inlet pressure is 15 psi to reach metered flow rate. Maximum inlet pressure is 125 psi. All materials are NSF Approved under Standard 61.

Maximum Operating Pressure — 125 psi
Maximum Operating Temperature — 140°F

Options

Material Options	Body - Black Polypropylene, White Polypropylene Delrin Retainer Acetal Flow Restrictor Ethylene Propylene O-Rings
End Options	3/4 Female NPT X 3/4 Female NPT
Flow Control Options	.26, .37, .53, .73, .79, .92, 1.06, 1.32, 1.58, 1.85, 2.11, 2.22, 2.38, 2.64, 3.17, 3.43, 3.7, 3.96 GPM

Example of How To Order

Body Material White Filled Poly	Inlet End 3/4 FNPT	Outlet End 3/4 FNPT	Flow Restrictor 2.38 GPM
---	------------------------------	-------------------------------	------------------------------------

SMC Part Number: WFP FR 687-12F12F-E,2.38 GPM

The flow arrow on the body will point from Inlet to Outlet. SMC Part Numbers are a description of the valve as read left to right, Inlet to Outlet.

Example: WFP FR 687-12F12F-E,2.38 GPM = 3/4 FNPT Inlet x 3/4 FNPT Outlet

SMC will quote alternate materials or customize our standard products when quantities ensure competitive pricing.