



Vertically Integrated, Made in the USA

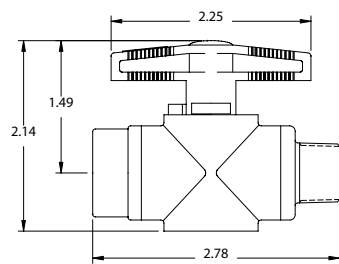
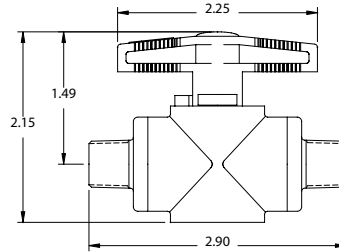
THE SPECIALTY MFG. CO.

5858 Centerville Road • St. Paul, MN 55127-6804

Tel: (651) 653-0599 • Fax: (651) 653-0989

www.specialtymfg.com • e-mail: info@specialtymfg.com

628 SERIES BALL VALVE



Design Considerations

The 628 Series Two-Way Trunnion Ball Valve design promotes multiple configurations to fit the exact end use application. The T-Handle and Ball are one piece extending through the valve body and sealed on the top and bottom. The colored handle center indicates the seal material. Black = Buna-N, Red = EP, Blue = Fluoroelastomer (Viton®) PVC with Buna-N or Ethylene Propylene seals is NSF Standard 42 Certified.

Maximum Operating Pressure — 125 psi
Maximum Operating Temperature — 140°F
Ball Through Hole Diameter — .375

Options

Material Options	Body, Handle and Ball - Gray PVC (Standard)
Seal Options	Buna-N, Ethylene Propylene, Fluoroelastomer (Viton®)
End Options	1/4, 3/8 Male and Female NPT

Example of How To Order

Body Material PVC	Inlet End 1/4 MNPT	Outlet End 1/4 FNPT	Seal Buna-N
-----------------------------	------------------------------	-------------------------------	-----------------------

SMC Part Number: PVC 628-4M4F-B

The handle will lie over the open port when the valve is in the Full Open position. SMC Part Numbers are a description of the valve as read left to right, Inlet to Outlet to Outlet.

Example: PVC 628-4M4F-B = 1/4 MNPT Inlet x 1/4 FNPT Outlet

SMC will quote alternate materials or customize our standard products when quantities ensure competitive pricing.