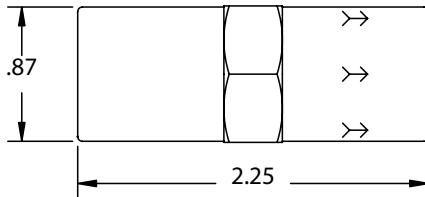


615 SERIES CHECK VALVE



Design Considerations

The 615 Series Piston Check Valve incorporates a piston with an embedded o-ring that seals on the seat. Pressure in the flow direction moves the piston and seal off the seat and exposes the cross holes in the piston. The 615 Series Check Valve maximum operating pressure of 500 psi covers a wide range of air and fluid applications. The 615 Check is a compact design and has a positive seal at very low back pressure or slight vacuum.

UL / UR configurations are available and rated to 500 psi.

Maximum Operating Pressure — 500 psi

Maximum Operating Temperature — 180°F

Seat Area Open Diameter — .375

Options

Material Options	Brass Body and Piston, Beryllium Copper Retainer 316 Stainless Body and Piston, 15-7 Stainless Retainer
Seal Options	Buna-N, Ethylene Propylene, Fluoroelastomer (Viton®), Neoprene
Brass End Options	3/8 FNPT Inlet x 3/8 FNPT Outlet
Stainless End Options	3/8 FNPT Inlet x 3/8 FNPT Outlet
Cracking Pressure	302 Stainless Spring - 1/3 psi, 1 psi (Standard), 2.5, 15 psi, No Spring
Plating Options	No Plating (Standard), Electroless Nickel

Example of How To Order

Body Material	Inlet End	Outlet End	Seal	Spring	Plating
Stainless	3/8 FNPT	3/8 FNPT	Viton®	1/3 psi	None

SMC Part Number: CHK SST 615-6F6F-F,1/3#

The flow arrow on the body will point from Inlet to Outlet. SMC Part Numbers are a description of the valve as read left to right, Inlet to Outlet.

Example: CHK SST 615-6F6F-F,1/3# = 3/8 FNPT Inlet x 3/8 FNPT Outlet

SMC will quote alternate materials or customize our standard products when quantities ensure competitive pricing.