



Vertically Integrated, Made in the USA

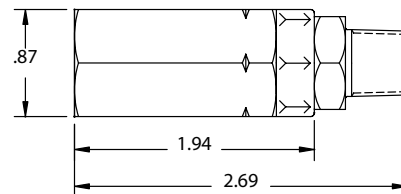
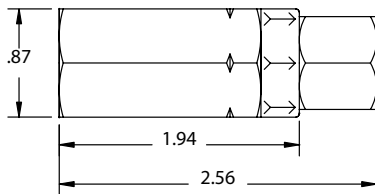
THE SPECIALTY MFG. CO.

5858 Centerville Road • St. Paul, MN 55127-6804

Tel: (651) 653-0599 • Fax: (651) 653-0989

www.specialtymfg.com • e-mail: info@specialtymfg.com

490 SERIES CHECK VALVE



Design Considerations

The 490 Series Ball Check Valve incorporates a stainless ball on an elastomer seat with multiple end configuration options. The 490 Check is designed for high pressure - light hydraulics, high pressure fluid or air applications where a positive seal is required. The 490 Check has a positive seal at very low back pressure or slight vacuum.

Maximum Operating Pressure — 3000 psi
Maximum Operating Temperature — 180°F
Seat Area Open Diameter — .280

Options

Material Options	Brass Body and Retainer, 316 Stainless Ball
Seal Options	Buna-N, Ethylene Propylene, Fluoroelastomer (Viton®)
Inlet End Options	1/4, 3/8 Male and Female NPT
Outlet End Options	1/4, 3/8 Male and Female NPT
Cracking Pressure	302 Stainless Spring – 1/2, 1 psi (Standard), 3, 6, 10, 30, 40, 55, 70 psi, No Spring
Plating Options	No Plating (Standard), Electroless Nickel

Example of How To Order

Body Material Brass	Inlet End 1/4 MNPT	Outlet End 1/4 FNPT	Seal Buna-N	Spring 1 psi
-------------------------------	------------------------------	-------------------------------	-----------------------	------------------------

SMC Part Number: CHK BRS 490-4M4F-B

The flow arrow on the body will point from Inlet to Outlet. SMC Part Numbers are a description of the valve as read left to right, Inlet to Outlet.

Example: CHK BRS 490-4M4F-B = 1/4 MNPT Inlet x 1/4 FNPT Outlet

SMC will quote alternate materials or customize our standard products when quantities ensure competitive pricing.