

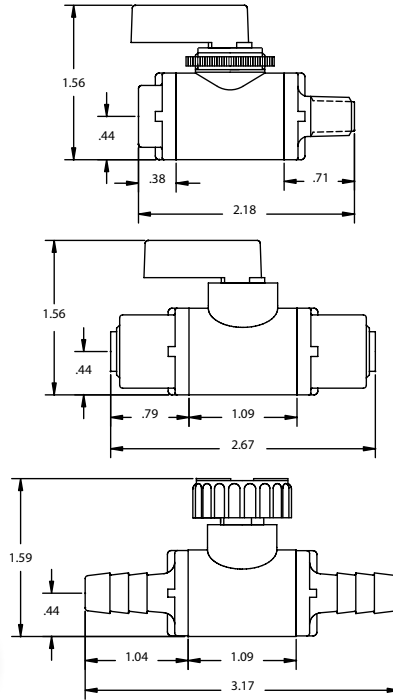


Vertically Integrated, Made in the USA

THE SPECIALTY MFG. CO.

5858 Centerville Road • St. Paul, MN 55127-6804
 Tel: (651) 653-0599 • Fax: (651) 653-0989
 www.specialtymfg.com • e-mail: info@specialtymfg.com

226 SERIES BALL VALVE



Design Considerations

The 226 Series Two-Way Ball Valve design promotes multiple configurations to fit the exact end use application. Most PVC and White Filled Polypropylene configurations are available as NSF Standard 42 Certified. Nylon, PVDF (Kynar®) and Filled Polypropylene are available for chemical resistance applications. MakroBlend is an NSF Standard 51 Certified Material. The optional panel mount hole is .750 and comes with a Brass or Electroless Nickel Plated Hex or Knurled panel mount nut. The Flag Handle is standard, a Round Knurled Handle is optional. The maximum panel thickness is .125.

Maximum Operating Pressure — 125 psi
Maximum Operating Temperature — 140°F
Ball Through Hole Diameter — .312

Options

Material Options	Gray PVC (Standard), White PVC, Black Polypropylene, White Polypropylene, Black Nylon, White Nylon, MakroBlend, Black PVDF (Kynar®)
Seal Options	Buna-N, Ethylene Propylene, Fluoroelastomer (Viton®)
End Options	1/8, 1/4 Male and Female NPT 3/8 BIB (Smooth Barb) 1/8, 1/4, 5/16, 3/8, 1/2 Hose Barb 1/8, 1/4 JACO (Not NSF Standard 42 Certified) 1/4, 3/8 SMC Push-To-Connect
Handle Options	Gray PVC Flag Handle (Standard), Red PVC, Blue PVC, Black Nylon, White PVC, Clear Lexan, Black Round ABS Knob
Panel Mount Options	Non-Panel Mount (Standard), Brass Knurl Nut, ENP Knurl Nut, Brass Hex Nut, ENP Hex Nut

Example of How To Order

Body Material PVC	Inlet End 1/4 MNPT	Outlet End 1/4 FNPT	Seal Buna-N	Handle Round	Panel Mount ENP HEX
-----------------------------	------------------------------	-------------------------------	-----------------------	------------------------	-------------------------------

SMC Part Number: PVC 226-4M4F-B,RND HDL,PNL,ENP HEX

The handle will lie over the Inlet port when the valve is in the open position. SMC Part Numbers are a description of the valve as read left to right, Inlet to Outlet.

Example: PVC 226-4M4F-B,RND HDL,PNL,ENP HEX = 1/4 MNPT Inlet x 1/4 FNPT Outlet

SMC will quote alternate materials or customize our standard products when quantities ensure competitive pricing.