



Vertically Integrated, Made in the USA

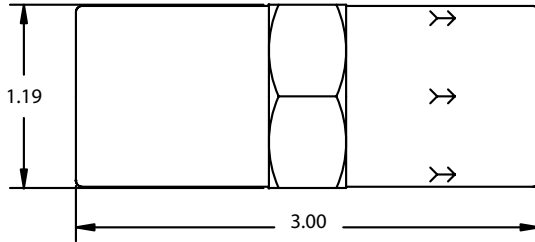
## THE SPECIALTY MFG. CO.

5858 Centerville Road • St. Paul, MN 55127-6804

Tel: (651) 653-0599 • Fax: (651) 653-0989

www.specialtymfg.com • e-mail: info@specialtymfg.com

# 1215 SERIES CHECK VALVE



### Design Considerations

The 1215 Series Piston Check Valve incorporates a piston with an embedded o-ring that seals on the seat. Pressure in the flow direction moves the piston and seal off the seat and exposes the cross holes in the piston. The 1215 Series Check Valve maximum operating pressure of 500 psi covers a wide range of air and fluid applications. The 1215 Check is a compact design and has a positive seal at very low back pressure or slight vacuum. UL / UR configurations are available and rated to 500 psi.

- Maximum Operating Pressure — 500 psi
- Maximum Operating Temperature — 180°F
- Seat Area Open Diameter — .594

### Options

<b>Material Options</b>	Brass Body and Piston, Beryllium Copper Retainer
<b>Seal Options</b>	Buna-N, Ethylene Propylene, Fluoroelastomer (Viton®), Neoprene
<b>End Options</b>	3/4 FNPT Inlet x 3/4 FNPT Outlet
<b>Cracking Pressure</b>	302 Stainless Spring - 1/2, 1 psi (Standard), No Spring
<b>Plating Options</b>	No Plating (Standard), Electroless Nickel

### Example of How To Order

<b>Body Material</b> Brass	<b>Inlet End</b> 3/4 FNPT	<b>Outlet End</b> 3/4 FNPT	<b>Seal</b> Viton®	<b>Spring</b> 1 psi	<b>Plating</b> None
-------------------------------	------------------------------	-------------------------------	-----------------------	------------------------	------------------------

**SMC Part Number:** CHK BRS 1215-12F12F-F

The flow arrow on the body will point from Inlet to Outlet. SMC Part Numbers are a description of the valve as read left to right, Inlet to Outlet.

Example: CHK BRS 1215-12F12F-F = 3/4 FNPT Inlet x 3/4 FNPT Outlet

SMC will quote alternate materials or customize our standard products when quantities ensure competitive pricing.