



Vertically Integrated, Made in the USA

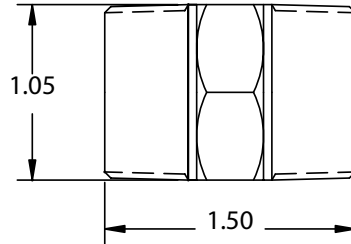
THE SPECIALTY MFG. CO.

5858 Centerville Road • St. Paul, MN 55127-6804

Tel: (651) 653-0599 • Fax: (651) 653-0989

www.specialtymfg.com • e-mail: info@specialtymfg.com

1200 SERIES CHECK VALVE



Design Considerations

The 1200 Series Poppet Check Valve incorporates an o-ring that is captured in a brass poppet to seal on a brass seat in the check valve body. The poppet style is an economical, general use design that provides a positive seal down to approximately 1/2 psi back pressure. The maximum operating pressure is 1200 psi. UL / UR configurations are available and rated to 500 psi.

Maximum Operating Pressure — 1200 psi

Maximum Operating Temperature — 180°F

Seat Area Open Diameter — .470

Options

Material Options	Brass Body, Poppet and Stop
Seal Options	Buna-N, Ethylene Propylene, Fluoroelastomer (Viton®), Neoprene
Body Options	3/4 MNPT Inlet x 3/4 MNPT Outlet
Cracking Pressure	302 Stainless Spring – 1 psi (Standard), 3, 5 psi, No Spring
Plating Options	No Plating (Standard), Electroless Nickel

Example of How To Order

Inlet End 3/4 MNPT	Outlet End 3/4 MNPT	Seal Viton®	Spring 1 psi	Plating None
------------------------------	-------------------------------	-----------------------	------------------------	------------------------

SMC Part Number: CHK BRS 1200-12M12M-F

The flow arrow on the body will point from Inlet to Outlet. SMC Part Numbers are a description of the valve as read left to right, Inlet to Outlet.

Example: CHK BRS 1200-12M12M-F = 3/4 MNPT Inlet x 3/4 MNPT Outlet

SMC will quote alternate materials or customize our standard products when quantities ensure competitive pricing.