



Vertically Integrated, Made in the USA

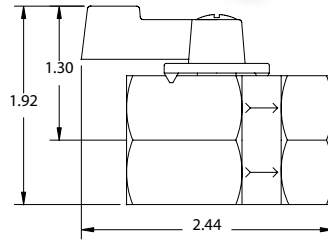
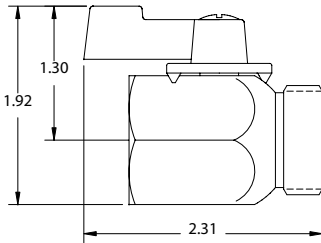
### THE SPECIALTY MFG. CO.

5858 Centerville Road • St. Paul, MN 55127-6804

Tel: (651) 653-0599 • Fax: (651) 653-0989

www.specialtymfg.com • e-mail: info@specialtymfg.com

## 075 SERIES BALL VALVE



### Design Considerations

The 075 Series One-Way Ball Valve compact design has a one piece body construction to cover 3/4" NPT and Garden Hose Thread end configuration applications. The 075 Ball Valve Series is rated to 125 psi and will support flow and pressure only in the flow direction. The Zinc Die Cast Lever Handle is standard. Handles can be ordered Reversed - to lie over the outlet when the valve is in the open position.

- Maximum Operating Pressure — 125 psi
- Maximum Operating Temperature — 180°F
- Ball Through Hole Diameter — .625

### Options

<b>Material Options</b>	Brass Body, Nickel Plated Brass Ball Segment, Teflon® Seat, Brass Handle Screw
<b>Seal Options</b>	Buna-N, Fluoroelastomer (Viton®)
<b>Body Options</b>	3/4 Female Garden Hose x 3/4 Male Garden Hose 3/4 Female NPT x 3/4 Male Garden Hose 3/4 Female NPT x 3/4 Female NPT
<b>Handle Options</b>	Zinc Die Cast Lever (Standard)
<b>Plating Options</b>	No Plating (Standard), Electroless Nickel

### Example of How To Order

<b>Body</b> 3/4 Female Garden Hose x 3/4 Male Garden Hose	<b>Seal</b> Buna-N	<b>Handle</b> Reversed	<b>Plating</b> ENP
--	-----------------------	---------------------------	-----------------------

**SMC Part Number: 075-12FGH12MGH,RH,ENP**

The handle will lie over the Inlet port when the valve is in the open position. SMC Part Numbers are a description of the valve as read left to right, Inlet to Outlet.

Example: 075-12FGH12MGH,RH,ENP = 3/4 Female Hose Inlet x 3/4 Male Hose Outlet

**SMC will quote alternate materials or customize our standard products when quantities ensure competitive pricing.**