



Vertically Integrated, Made in the USA

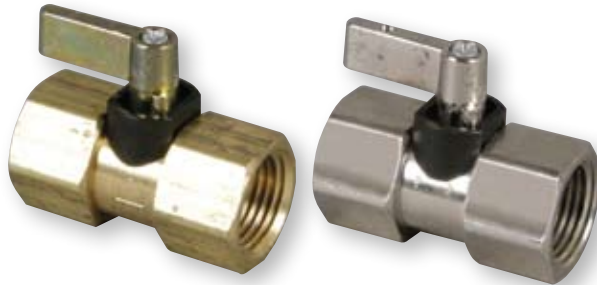
THE SPECIALTY MFG. CO.

5858 Centerville Road • St. Paul, MN 55127-6804

Tel: (651) 653-0599 • Fax: (651) 653-0989

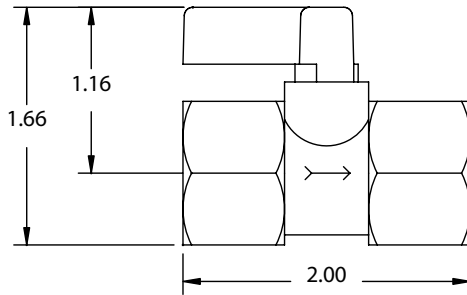
www.specialtymfg.com • e-mail: info@specialtymfg.com

050 SERIES BALL VALVE



Design Considerations

The 050 Series One-Way Ball Valve compact design has a one piece body construction with stamped directional flow arrows. The 050 Ball Valve Series is rated to 500 psi and will support flow and pressure only in the flow direction. The Zinc Die Cast Flag Handle can be ordered Reversed - to lie over the outlet when the valve is in the open position.



Maximum Operating Pressure — 500 psi
Maximum Operating Temperature — 180°F
Ball Through Hole Diameter — .312

Options

Material Options	Brass Body, Nickel Plated Brass Ball, Teflon® Seats, Stainless Handle Screw
Seal Options	Buna-N, Ethylene Propylene, Fluoroelastomer (Viton®), Neoprene
Body Options	1/2 Female x 1/2 Female NPT
Handle Options	Zinc Die Cast Flag (Standard)
Plating Options	No Plating (Standard), Electroless Nickel

Example of How To Order

Inlet End 1/2 FNPT	Outlet End 1/2 FNPT	Seal Buna-N	Handle Reversed	Plating ENP
------------------------------	-------------------------------	-----------------------	---------------------------	-----------------------

SMC Part Number: 050-8F8F-B,RH,ENP

The handle will lie over the Inlet port when the valve is in the open position. SMC Part Numbers are a description of the valve as read left to right, Inlet to Outlet.

Example: 050-8F8F-B,RH,ENP = 1/2 FNPT Inlet x 1/2 FNPT Outlet

SMC will quote alternate materials or customize our standard products when quantities ensure competitive pricing.