



Vertically Integrated, Made in the USA

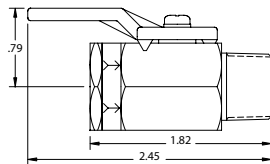
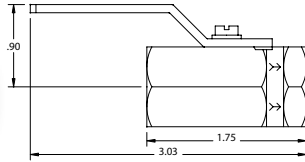
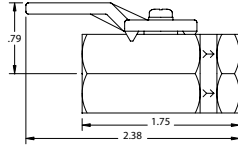
### THE SPECIALTY MFG. CO.

5858 Centerville Road • St. Paul, MN 55127-6804

Tel: (651) 653-0599 • Fax: (651) 653-0989

www.specialtymfg.com • e-mail: info@specialtymfg.com

## 036 SERIES BALL VALVE



### Design Considerations

The 036 Series One-Way Ball Valve compact design promotes multiple configurations to fit the exact end use application. The 036 Ball Valve Series is rated to 500 psi and will support flow and pressure only in the flow direction. The 036 Series has a one piece body construction, stamped with directional flow arrows, to cover 3/8" NPT end configuration applications. The Zinc Die Cast Lever Handle is standard. Handles can be ordered Reversed - to lie over the outlet when the valve is in the open position. UL configurations are available and rated to 250 psi. UR configurations are available and rated to 500 psi.

- Maximum Operating Pressure — 500 psi
- Maximum Operating Temperature — 180°F
- Ball Through Hole Diameter — .312

### Options

<b>Material Options</b>	Brass Body, Nickel Plated Brass Ball, Teflon® Seats, Stainless Handle Screw
<b>Seal Options</b>	Buna-N, Ethylene Propylene, Fluoroelastomer (Viton®), Neoprene
<b>Body Options</b>	3/8 Female x 3/8 Female NPT 3/8 Female x 3/8 Male NPT
<b>Handle Options</b>	Zinc Die Cast Lever (Standard), Zinc Die Cast Lever with Red Vinyl Sleeve, Steel Lever Handle, Steel Lever with Red Vinyl Sleeve
<b>Plating Options</b>	No Plating (Standard), Electroless Nickel, Barrel Nickel

### Example of How To Order

<b>Inlet End</b> 3/8 FNPT	<b>Outlet End</b> 3/8 MNPT	<b>Seal</b> Buna-N	<b>Handle</b> Steel	<b>Plating</b> ENP
------------------------------	-------------------------------	-----------------------	------------------------	-----------------------

**SMC Part Number:** 036-6F6M-B,SH,ENP

The handle will lie over the Inlet port when the valve is in the open position. SMC Part Numbers are a description of the valve as read left to right, Inlet to Outlet.

Example: 036-6F6M-B,SH,ENP = 3/8 FNPT Inlet x 3/8 MNPT Outlet

**SMC will quote alternate materials or customize our standard products when quantities ensure competitive pricing.**