

# PIVOTING BLIND MATE COUPLING (PBMC)



PART NUMBERS	
Plug	SW102101
Socket	SW102105



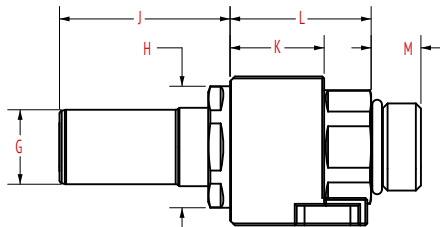
**OCP**  
INSPIRED™

## High Flow, Rack-Agnostic

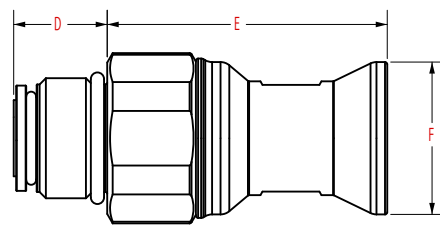
- Meets dimensional requirements of OCP PBMC Specification
- Tested per OCP PBMC Spec Table 7.1
- Interoperability tested with all original PBMC suppliers (listed in specification)
- Wetted materials stainless and EPDM
- 5 mm radial misalignment capability
- 2.5° angular capability
- Durability tested in excess of 2,500 cycles under various conditions, including:
  - Dry conditions
  - Static pressure
  - Full flow at rated pressure and misaligned

## PERFORMANCE & PHYSICAL ATTRIBUTES

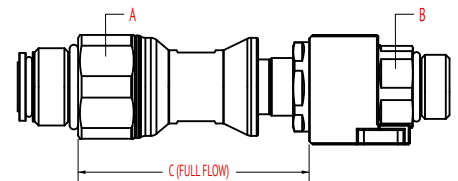
Body Material	Plug Thread	Socket Thread	Max. Operating Pressure	Rated Flow		Max. Spillage Per Disconnect	Weight
Stainless Steel	-10 ORB (7/8-14 UNF)	-12 ORB (1-1/16-12 UN)	75 PSI (5.17 bar)	9.5 GPM	36 LPM	≤0.06 cm <sup>3</sup> @ 0 PSI ≤0.12 cm <sup>3</sup> @ 75 PSI	Socket = .54 lb (245g) Plug = .58 lb (265g)



PLUG (SW102101)



SOCKET (SW102105)



FULLY MATED

## DIMENSIONAL DATA

A	B	C	D	E	F	G	H	J	K	L	M
36 mm HEX	27 mm HEX	2.83-3.09" (72.0-78.5 mm)	.82" (20.9 mm)	2.46" (62.5 mm)	1.34" (34.0 mm)	0.75" (19.0 mm)	1.22" (31.0 mm)	1.71" (43.5 mm)	0.94" (24.0 mm)	1.42" (36.0 mm)	0.50" (12.7 mm)

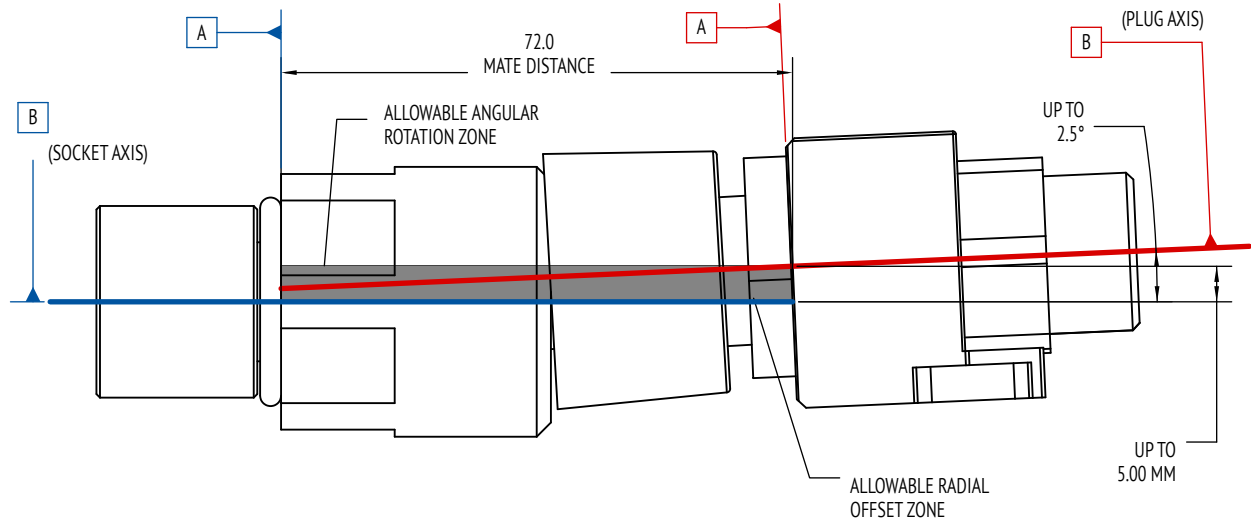
Actual performance may exceed OCP specification requirements, please contact Safeway for additional information.

View additional product information online



# PIVOTING BLIND MATE COUPLING (PBMC)

## Combined Offset: 5 mm Radial + 2.5° Angular

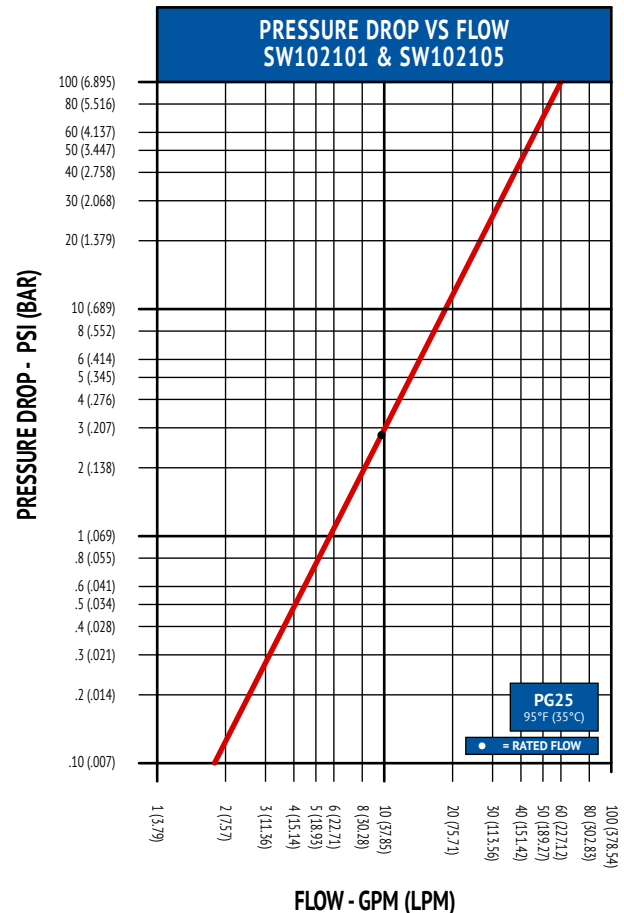


PLUG	
Datum A	The face of the block features that contacts the inside of the IT gear panel
Datum B	The shoulder protruding from Datum A

SOCKET	
Datum A	The seating face of the valve to the manifold
Datum B	The center of the threaded stud that threads into the manifold

### Ideal Use Cases:

- 10U / 1RU liquid-cooled IT system
- Hyperscale data centers
- OCP-based liquid-cooled servers
- IT systems requiring hot swaps
- Rack-level and modular cooling architectures



Actual performance may exceed OCP specification requirements, please contact Safeway for additional information.

View additional product information online

