

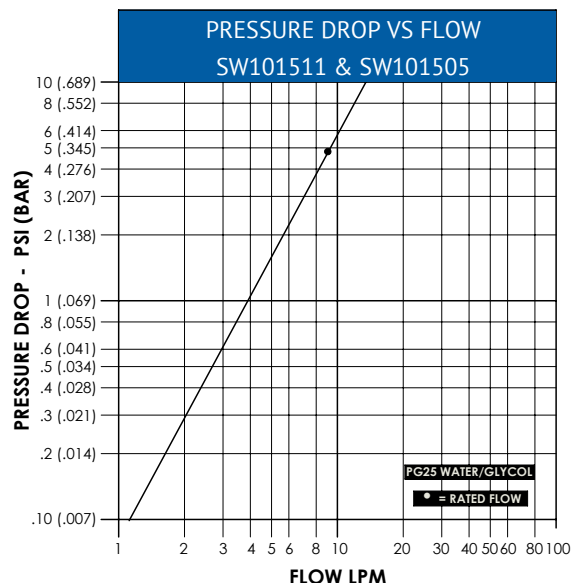
# BLIND MATE QUICK CONNECTOR



**OCP  
INSPIRED™**

## PART NUMBERS

Plug (male half)	SW101511
Socket (female half)	SW101505

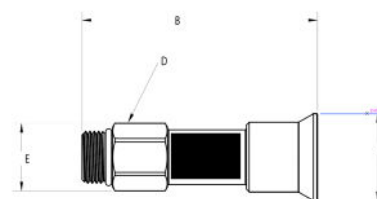
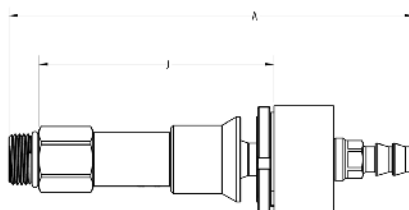
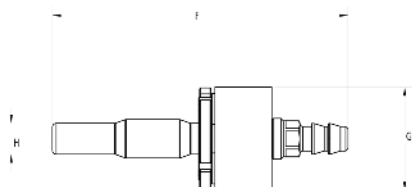


## Self-Aligning & Rack Integratable

- Blind mate quick connector designed for rack integrated liquid cooling solutions
- Supports up to 5mm of radial misalignment and up to 2.74° of angular misalignment.
- Meets or exceeds dimensional and performance requirements for OCP ORv3 BMQC specification.
- Lower restriction than other brands while maintaining conformance to specification.
- Lower average mate force than other brands.
- Fully interchangeable with other OCP Accepted™ or OCP Inspired™ ORv3 BMQC couplings.
- Wetted Components: Stainless Steel and EPDM
- Connection Style: Blind Mate, dry break.
- Valve Type: Poppet/O-ring Seal

## PERFORMANCE & PHYSICAL ATTRIBUTES

Body Size	Body Material	Socket Thread Size	Plug Barb Size	Max. Operating Pressure	Rated Flow		Max. Spillage Per Disconnect	Complete Weight
0.2" (5mm)	Stainless Steel	3/4 -16 UNF (SAE)	3/8" barb (10mm)	175 PSI* <small>*Based on house capability</small>	9 LPM	2.4 GPM	.05mL @ 50psi .25mL @ 0psi	0.74 LBS (0.34 kg)



## DIMENSIONAL DATA

A	B	C	D	E	F	G	H	I
5.93" (150.4mm)	3.39" (86.11mm)	1.25" (31.7mm)	.866" (22mm)	.97" (24.6mm)	4.54" (115.1mm)	1.58" (40mm)	.47" (12mm)	3.44" (87.40 mm)

Temperature range: standard seals EPDM max operating temperature 140°F (60°C). Vacuum data: 27.4 inches Hg. both connected and disconnected pressure rating (Max. Operating Pressure) is based on non-pulsating, low cycle applications with essentially steady pressure during the operating cycle. Please contact factory regarding other applications.

**View additional  
product information online.**

