



Vertically Integrated, Made in the USA
www.specialtymfg.com

THE SPECIALTY MFG. CO.

5858 Centerville Road
St. Paul, MN 55127

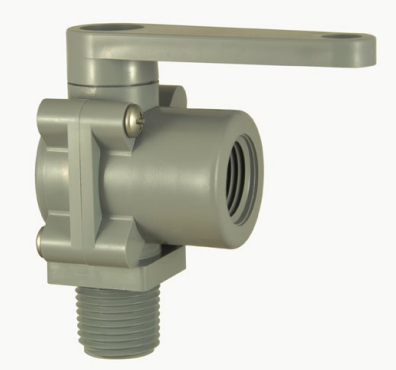
SMC will quote alternate materials or customize our standard products when quantities ensure competitive pricing.

Contact Customer Service at (651) 653-0599

FAX - (651) 653-0989

E-Mail - info@specialtymfg.com

357 SERIES TWO-WAY RIGHT ANGLE BALL VALVE 1/4" to 3/4" NPT, 3/8" to 3/4" BARB, 1/2" to 3/4" SOCKET, 1/2" BIB



Design Considerations

- The 357 Two-Way Right Angle Ball Valves feature Gray PVC as the standard material
- Filled Polypropylene is available for chemical resistance applications
- The bottom port is the designated Inlet Port
- Flow is supported in either direction - in the bottom, out the side - or - in the side, out the bottom
- Lever Handle is standard, optional Mini-T Handle, Round Handle or Extended Lever Handle available

Example of how to order

<u>Material</u>	<u>Type</u>	<u>Inlet Port</u>	<u>Outlet Port</u>	<u>Seal</u>	<u>Handle</u>
Gray PVC	Two-Way, Right Angle	1/2 Male NPT	1/2 Female NPT	Buna	Lever

Part Numbers are a description of the valve as read left to right, Inlet Port to Outlet Port.
PVC 357-8M8F-B = Gray PVC Two-Way Right Angle Ball Valve, 1/2 Male NPT Inlet x 1/2 Female NPT Outlet, Buna Seals, Lever Handle

Specifications

Material	Gray PVC Black Glass Filled Polypropylene, White Glass Filled Polypropylene
Type	90 DEGREE TWO-WAY - Supports Flow and Pressure in either direction
Inlet End	1/4 Female NPT, 3/8 Female NPT, 1/2 Female NPT 3/8 Barb, 1/2 Barb, 5/8 Barb 1/2 Male NPT, 3/4 Male NPT 1/2 Socket (.850 ID), 3/4 Socket (1.06 ID) 1/2 BIB (Smooth Barb)
	1/4 Female NPT, 3/8 Female NPT, 1/2 Female NPT, 3/4 Female NPT

Outlet End	1/2 Male NPT, 3/4 Male NPT 3/8 Barb, 1/2 Barb, 5/8 Barb, 3/4 Barb 1/2 Socket (.850 ID), 3/4 Socket (1.06 ID) 1/2 BIB (Smooth Barb)
Seal Option	Buna-N, Ethylene Propylene, Fluoroelastomer (Viton®)
Handle Option	Lever Handle Mini-T Handle Handle with 1" Offset Extension Round Handle
Mounting Bracket Option	Mounting Bracket - 304 Stainless
Ball Through Hole Diameter	0.437 in
Cv	2.3 with 1/4 Female NPT Ends
Maximum Operating Pressure	125 psi
Maximum Operating Temperature	140 °F
Pricing and Minimum Order Requirement	<p>Our Minimum Order Requirements are \$100.00 Domestic - \$250.00 International. Pricing is based on the quantity ordered.</p> <p>Please indicate a typical order quantity or Estimated Annual Usage when requesting pricing.</p>