



Vertically Integrated, Made in the USA

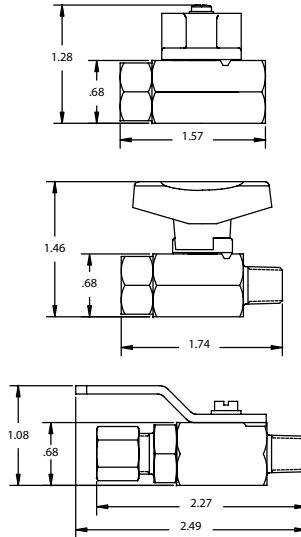
THE SPECIALTY MFG. CO.

5858 Centerville Road • St. Paul, MN 55127-6804

Tel: (651) 653-0599 • Fax: (651) 653-0989

www.specialtymfg.com • e-mail: info@specialtymfg.com

012 SERIES BALL VALVE



Design Considerations

The 012 Series Two-Way Ball Valve compact design promotes multiple configurations to fit the exact end use application. The 012 Ball Valve Series is rated to 500 psi and will support flow and pressure in either direction. The 012 Series has a two piece body and end construction to cover 1/8" NPT end configuration applications. The Zinc Die Cast Lever Handle is standard. Handles can be ordered Reversed - to lie over the outlet when the valve is in the open position. UL configurations are available and rated to 250 psi. UR configurations are available and rated to 500 psi.

- Maximum Operating Pressure — 500 psi
- Maximum Operating Temperature — 180°F
- Ball Through Hole Diameter — .218

Options

Material Options	Brass Body and Ends, Nickel Plated Brass Ball, Teflon® Seats, Stainless Handle Screw	
Seal Options	Buna-N, Ethylene Propylene, Fluoroelastomer (Viton®), Neoprene	
End Options	1/8, 1/4 Male and Female NPT 1/4, 5/16, 3/8 Hose Barb 1/4, 3/8 Male Flare 1/4 Female Flare	1/4 Compression 11/16-16 Male 1/4, 5/16 Fast & Tite
Body Options	1/8 Male and Female NPT	
Handle Options	Zinc Die Cast Lever (Standard), Zinc Die Cast Lever with Red Vinyl Sleeve, Steel Lever, Steel Lever with Red Vinyl Sleeve, Round Zinc Die Cast Handle, Black Nylon T-Handle, Blue Plastic Handle, .312 x 1" Zinc Die Cast Stem, Screw Slot Headed Ball	
Plating Options	No Plating (Standard), Electroless Nickel	

Example of How To Order

Inlet End 1/8 MNPT	Outlet End 1/8 FNPT	Seal Buna-N	Handle Round	Plating ENP
------------------------------	-------------------------------	-----------------------	------------------------	-----------------------

SMC Part Number: 012-2M2F-B,RND HDL,ENP

The handle will lie over the Inlet port when the valve is in the open position. SMC Part Numbers are a description of the valve as read left to right, Inlet to Outlet.

Example: 012-2M2F-B,RND HDL,ENP = 1/8 MNPT Inlet x 1/8 FNPT Outlet

SMC will quote alternate materials or customize our standard products when quantities ensure competitive pricing.